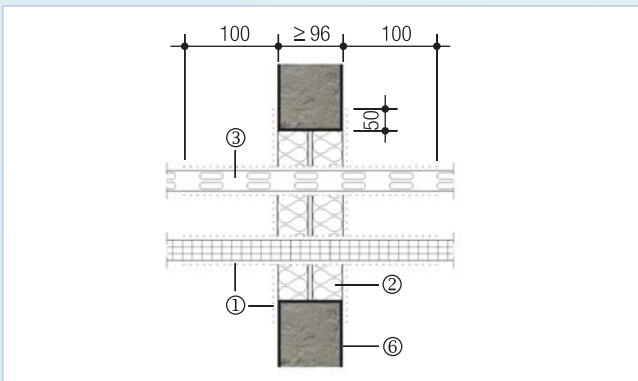


Intumex® SB - Bulkhead Sealer System

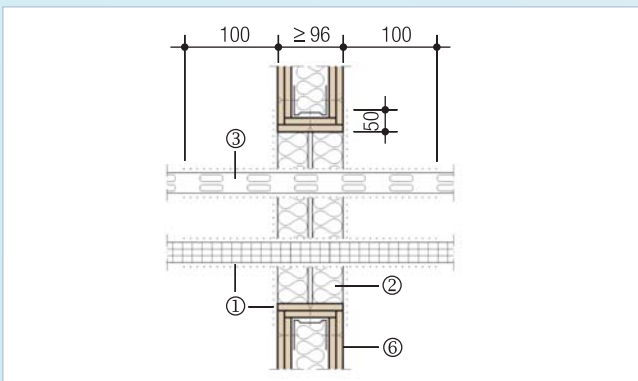
- ① Intumex® SB Bulkhead Sealer System 1-2mm thick
- ② Mineral wool panels, 2 x 50mm thick
- ③ Cable trays
- ④ Suspension or support of cable trays
- ⑤ Cables, cable bunches, optical waveguides, metal pipes or service trunking
- ⑥ Brickwork or concrete walls, with fire resistance \geq the fire resistance of the installed system
- ⑦ Solid slab, with fire resistance \geq the fire resistance of the installed system

NOTE: Insulation criteria will vary depending upon the system used and the services.



Intumex® SB - Lightweight partition

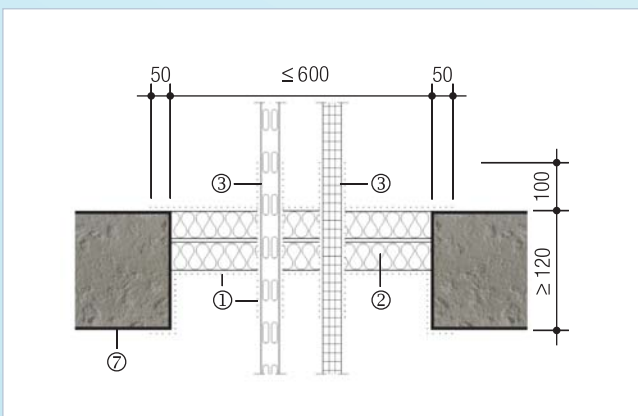
The lightweight partitions should be tested to either BS 476: Part 22 or AS 1530.4 to the same or greater period of fire resistance as the Bulkhead System.



Intumex® SB - Solid wall

Intumex® SB may be mounted in brickwork, concrete or lightweight walls ≥ 96 mm thick, provided the fire resistance is higher or equal to the installed system.

For installations in thicker walls, the mineral wool panels are arranged as a flush surface on both sides with a suitable gap in between. For cable seals, the cable trays have to be supported on both sides nominal 100mm before the wall opening ④.



Intumex® SB - Floor penetration

Typical arrangement of cable trays within Intumex® SB.

- Wall Opening ≤ 1000 mm high with
 - maximum 1m^2 surface area
 - ≤ 500 mm high x unlimited length
- Floor Opening ≤ 600 mm wide x unlimited length
 - when supported every 500mm (maximum)
 - ≤ 300 mm wide x unlimited length unsupported at joins

For more information on application, please check with your local supplier or nearest Intumex office.